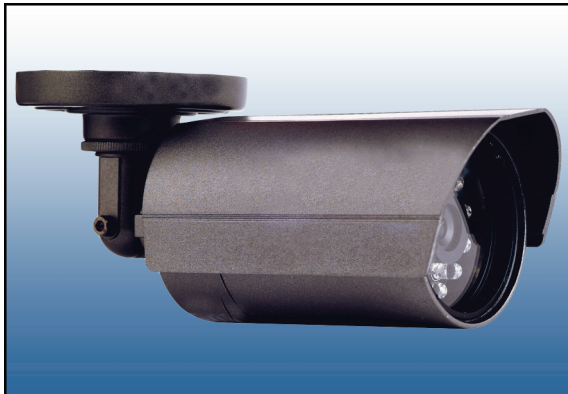


Infrared Bullet Camera



1/3" Color High Resolution IR Bullet Camera. Waterproof Color, Day/Night Camera. Sony SuperHad Chip, High resolution, 500 Lines. 3.6mm Lens 12V DC. Complete with Bracket, Sun Shield and 24 Infrared LED's. Features Dual Glass Technology, for no IR reflection

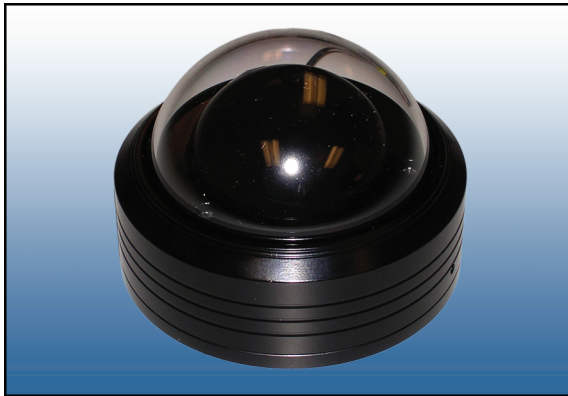
Features

- 1/3" SONY SUPER HAD 500TVL High Resolution
- Image Sensor Built-in.
- Min Illumination : 0.2 Lux (IR off)
- True Color in the Day and True B/W at Night.
- Weatherproof (IP=67)
- Manufactured of Cast Aluminum.
- 12V DC

SPECIFICATIONS

Image Sensor	1/3" SONY SUPER HAD 500TVL:
Min. Illumination	0.2 Lux/F1.6
Scanning Frequency Horizontal:	15,734Hz NTSC
Video output Level	1.0Vp-p (75ohms, Composite)
S/N Ratio	More than 50dB (AGC Off)
Gamma	r = 0.45
White Balance	2,100°K - 9200°K - Auto
Gain Control	4dB - 32dB - Auto
IRIS Control	Auto
Backlight Compensation	On
Operating Temp/Humidity	- 4°F - +122°F (10% - 95% RH)
Lens	3.6mm
MTBF	80,000 Hours,
Power Source	DC12V 310mA
Dimensions	4" x 2.5" x 2.3" (D x W x H)
Net Weight	0.85 LB's (w/Sunshield & Bracket)

Vandal / Weather Proof Dome



1/3" Tamperproof & Waterproof Color Day/Night Camera. Sony SuperHad Chip, High resolution, 540 Lines, 3.6mm Lens., Works on 12V DC. Camera sees at any angle with unique ball mount.

Features

- 1/3" SONY SUPER HAD 540TVL High Resolution Image Sensor Built-in.
- Min Illumination : 0.2 Lux
- True Color in the Day and True B/W at Night.
- Weatherproof (IP=67)
- Manufactured of Cast Aluminum.
- Ball mount for any angle viewing
- 12V DC

SPECIFICATIONS

Image Sensor	1/3" SONY SUPER HAD 540TVL:
Min. Illumination	0.2 Lux/F2.0
Scanning Frequency Horizontal:	15,734Hz NTSC
Video output Level	1.0Vp-p (75ohms, Composite)
S/N Ratio	More than 50dB (AGC Off)
Gamma	r = 0.45
White Balance	2,100°K - 8200°K - Auto
Gain Control	4dB - 32dB - Auto
IRIS Control	Electronic
Backlight Compensation	On
Operating Temp/Humidity	- 4°F - +122°F (10% - 95% RH)
Lens	3.6mm
MTBF	80,000 Hours,
Power Source	DC12V 60mA
Dimensions	3 75" x 2.5" (D x H)
Net Weight	1.2 lbs

Color Motion Detector Camera



1/3" Color Pinhole camera, designed similar to a Motion Detector. Infrared Leds for seeing at night time. Sony 420 Line SuperHad chip. 4.2mm Pinhole lens. Includes Mounting Bracket. 12V DC

Features

- 1/3" SONY SUPER HAD 420TVL
- 0.2 Lux/F1.6 (with IR off)
- (WxHxD) 2.6" x 3.6" x 2.5"

SPECIFICATIONS

Image Sensor	1/3" SONY SUPER HAD 420TVL
Min. Illumination	0.2 Lux/F1.6 (with IR off)
Scanning Frequency Horizontal:	15,734Hz NTSC
Video output Level	1.0Vp-p (75ohms, Composite)
S/N Ratio	More than 50dB (AGC Off)
Gamma	r = 0.45
White Balance	2,100°K - 9200°K - Auto
Gain Control	4dB - 32dB - Auto
IRIS Control	Electronic
Backlight Compensation	On
Operating Temp/Humidity	14°F - +122°F (10% - 95% RH)
Lens	4.2mm Pinhole
Power Source	DC12V 120mA
Dimensions	(WxHxD) 2.6" x 3.6" x 2.5"
Net Weight	0.35 Oz's